

Algoritmo per un dolore mammario nella donna che non allatta

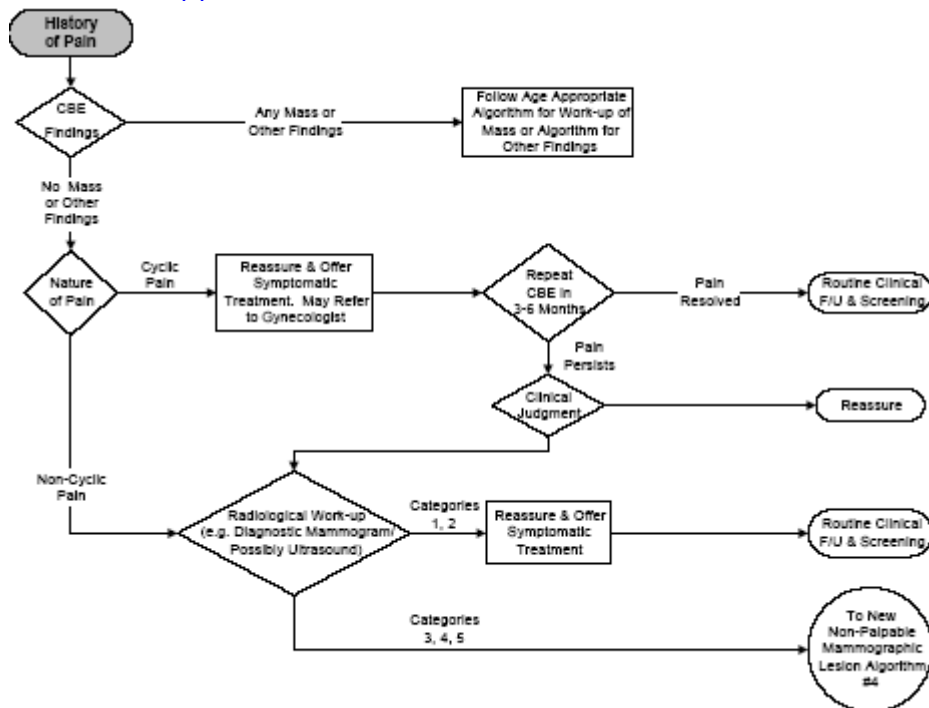
Clinical Breast Protocols Workgroup

May 2000 Revised Second Edition

California Department of Health Services, Cancer Detection Section

Publisher: University of California – Davis

www.sdsu.edu/gap



note all'algoritmo

- Category 2. Benign finding—routine screening schedule
- Category 3. Probably benign finding — short interval follow-up suggested
- Category 4. Suspicious abnormality — biopsy should be considered
- Category 5. Highly suggestive of malignancy — appropriate action should be taken.