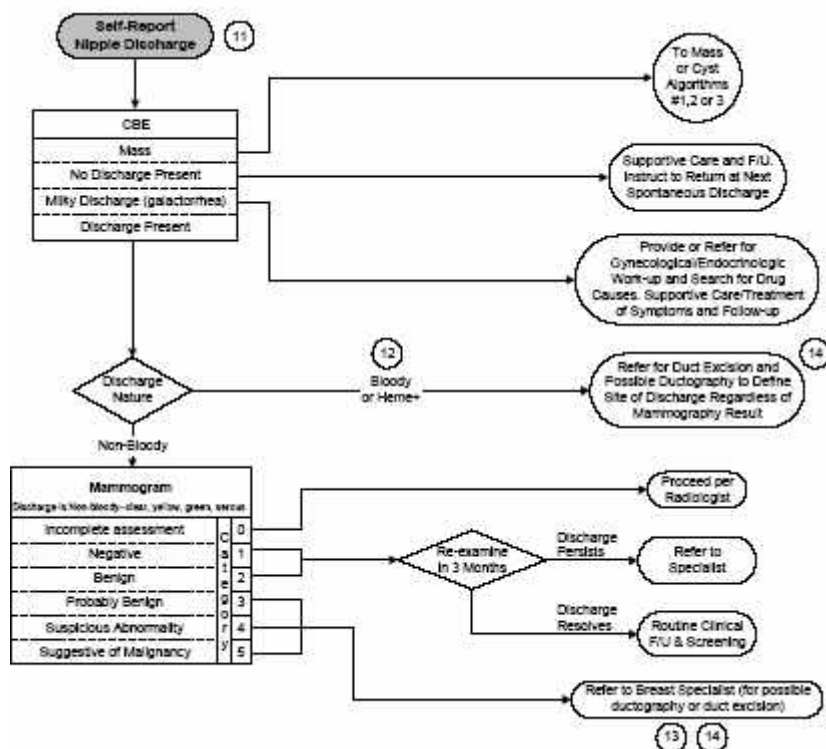


# Algoritmo per una secrezione spontanea unilaterale dal capezzolo in donna che non allatta

Clinical Breast Protocols Workgroup  
 May 2000 Revised Second Edition  
 California Department of Health Services, Cancer Detection Section  
 Publisher: University of California – Davis  
[www.sdsu.edu/qap](http://www.sdsu.edu/qap)



note all' algoritmo

- 11 A non-spontaneous discharge usually is normal. Thus it is more clinically relevant to elicit a history of a spontaneous discharge. The patient should be asked whether she has noticed staining of her clothing. A true nipple discharge originates in one or more duct(s). Pseudo-nipple discharges can be caused by inverted nipples, eczema, infection, etc.
- 12 Heme + refers to a positive result on a Hemocult test. Discharges can be tested for occult blood.
- 13 The mammographic abnormality should correspond with the quadrant from which the discharge originates. (An abnormality that does not correspond to the quadrant may represent a separate lesion. Even a mammographic abnormality that corresponds to the palpable lesion might be a separate lesion, needing further work-up.)
- 14 Ductography, also referred to as galactography, is a mammographic study that involves injection of water-soluble contrast into a duct. Ductography can be a guide to aid diagnosis and define the source (location) of the duct causing the nipple discharge. It may minimize the necessity for and size of surgical resection. Clinicians disagree about its utility and cost-effectiveness. Surgical and/or radiological consultation is recommended prior to embarking upon this procedure.

Eczema	Paget's Disease of the Nipple
Usually bilateral	Unilateral
Intermittent history with rapid evolution	Continuous history with slow progression
Moist	Moist or dry
Indefinite edge	Irregular but definite edge
Nipple may be spared	Nipple always involved and disappears in advanced cases
Itching common	Itching common

From Hughes LE et al. *Benign Disorders and Diseases of the Breast: Concepts and Clinical Management*. London, Ballière Tindell, 1989.