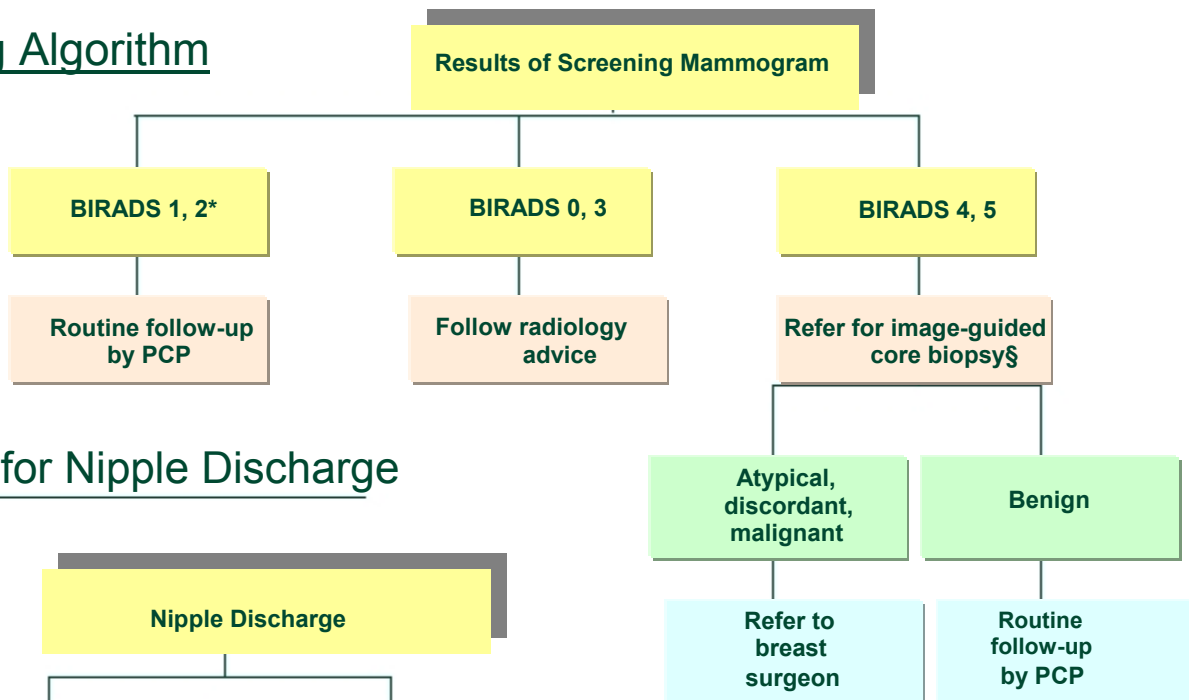
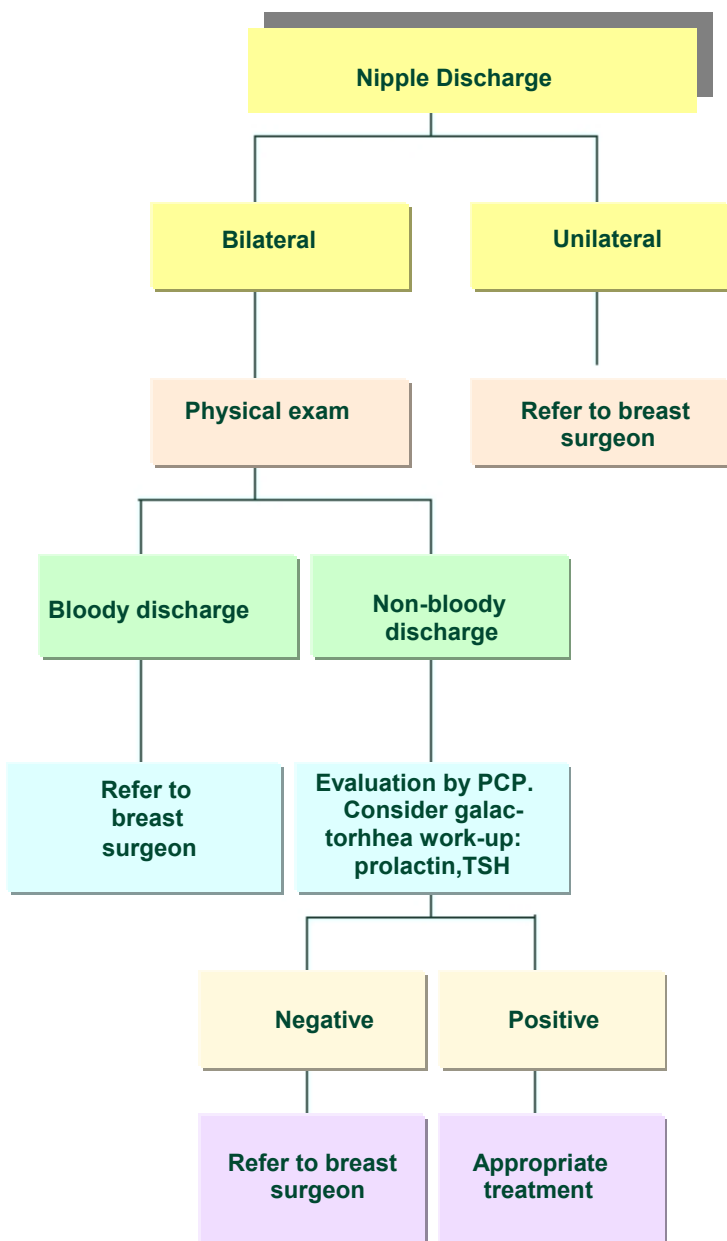


Screening Algorithm



Algorithm for Nipple Discharge

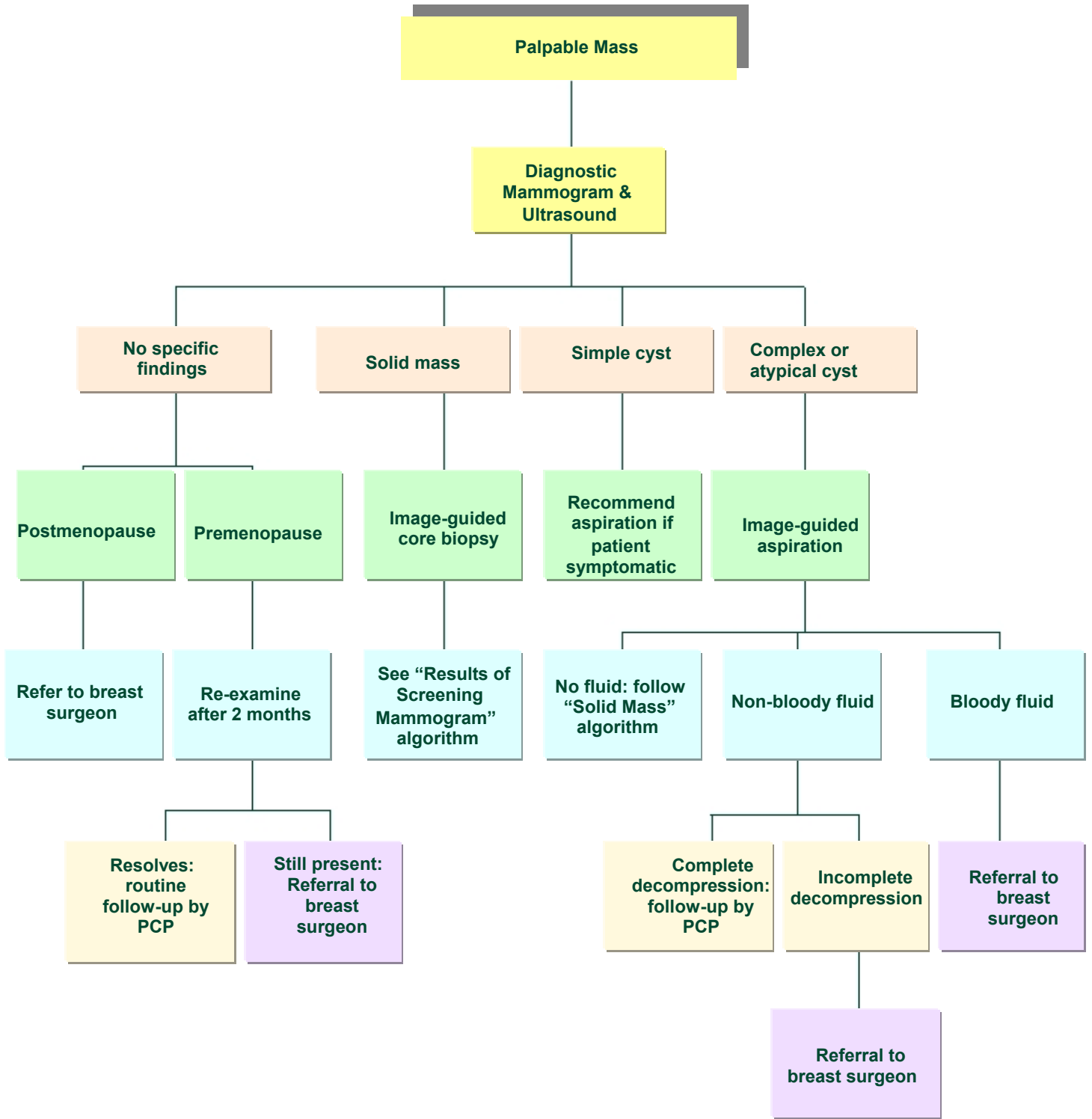


*American College of Radiology Breast Imaging Reporting and Data System (BIRADS)

- 0 Assessment incomplete; additional imaging necessary
- 1 Negative
- 2 Benign finding
- 3 Probably benign finding - short interval follow-up
- 4 Suspicious abnormality - biopsy recommended
- 5 Highly suspicious of malignancy

§Results will be benign in 65% of cases, malignant in 25%, indeterminate in 10%. Procedure is not recommended in the following situations:

- ⚡ Mammographic abnormality too close to chest wall or nipple
- ⚡ Presence of coagulopathy
- ⚡ Severe arthritis
- ⚡ Mammographic lesions requiring magnification
- ⚡ Mammographic finding of "complex sclerosing lesion" - best evaluated by complete surgical excision



Mammography can be performed safely in pregnant women. Radiation exposure is <1rem, and radiation exposure < or equal to 500 rem above background is considered safe in pregnancy.

Algorithm for Breast Pain

